



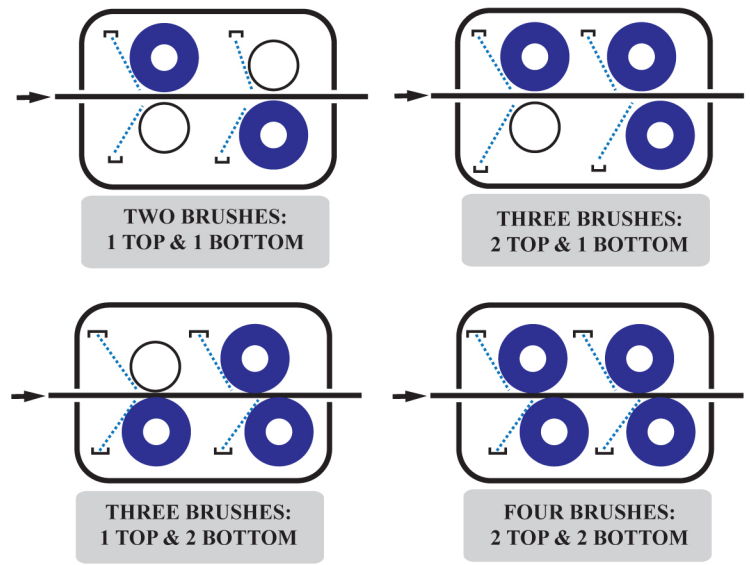
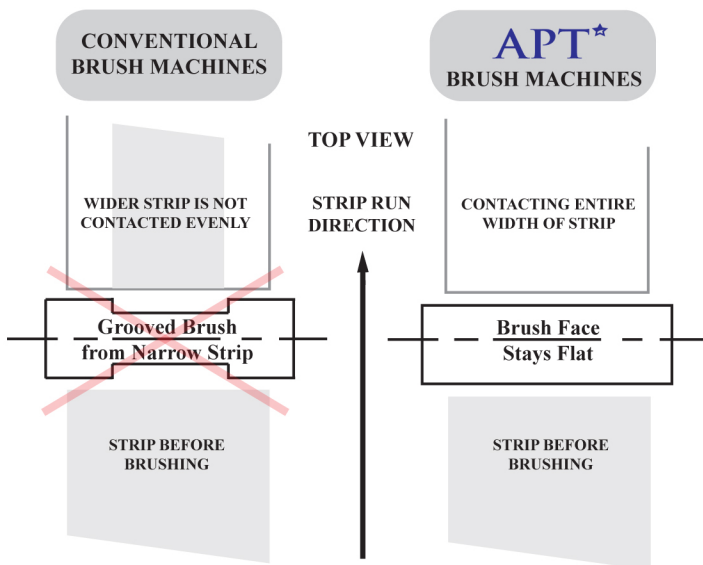
RETHINKING BRUSHING

THE SMARTER BRUSH BOX

BRUSHES ARE CONTINUOUSLY DRESSED TO REMAIN IN UNIFORM CONTACT ACROSS THE WIDTH OF THE STRIP, RESULTING IN CONSISTENT **CLEANING AND / OR SATIN FINISHING**

A TWO HEAD BRUSH BOX CAN BE CONFIGURED 4 WAYS

MANY COIL PROCESSORS BRUSH SINGLE SIDED, OR REQUIRE MORE SURFACE CONTACT **CLEANING AND/ OR SATIN FINISHING** FOR YOUR PRODUCTS



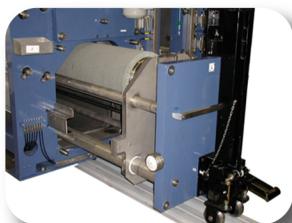
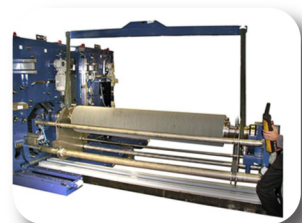
10 MINUTE BRUSH CHANGE

ALL BEARING OUT OF WET SECTION

SENSOR FEED BACK AND AUTOMATIC LOAD CONTROL = MAXIMUM MACHINE UP TIME

BRUSH ON BRUSH CONFIGURATION

CANTILEVER CONFIGURATION



For Further Details, Please Contact **APT[★]** At:

CELL : 404-932-2104
OFFICE: 352-751-4286
FAX: 352-751-4287

EMAIL : dthiemann@atlantechprocess.com
POST: 1953 LAKE MIONA DRIVE,
LADY LAKE, FLORIDA 32162

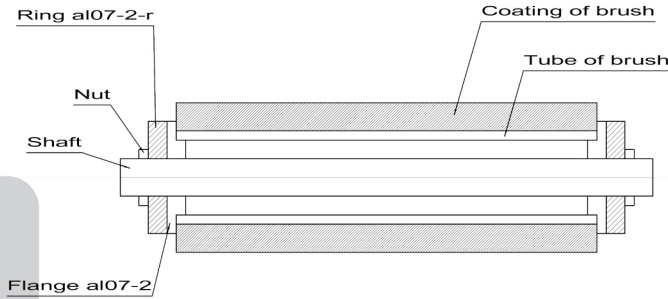
Please Visit us on the Web at WWW.ATLANTECHPROCESS.COM

BRUSHES DESIGNED FOR YOUR SPECIFIC NEEDS



NON-WOVEN BRUSHES

FOR PRECISION FINISHES WHERE UNIFORM CLEANING AND/OR SATIN FINISHES ARE DEMANDED. FROM MICROFINISHES TO HEAVY OXIDE REMOVAL

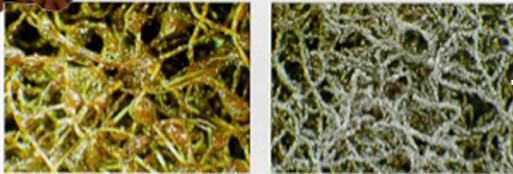
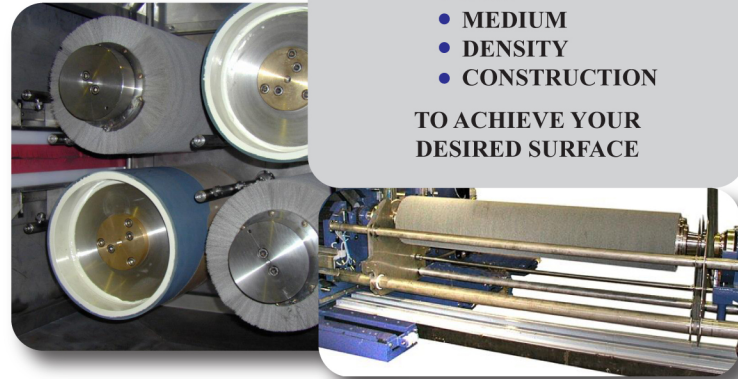


BRISTLE BRUSHES

WE DEVELOP CUSTOM ENGINEERED PRODUCTS

- GRIT TYPE
- SIZE
- MEDIUM
- DENSITY
- CONSTRUCTION

TO ACHIEVE YOUR DESIRED SURFACE



Quality Al₂O₃

Quality SiC

Grit Sizes

FALCON BRITE products are available in various grit sizes. The grit sizes can be classified as following:

Falcon Brite-designation		Scotch-Brite™-designation (abbreviation)	Al ₂ O ₃	SiC	Roughness (approx.) on Cu in Rz
03	COARSE	CRS	●		
04	MEDIUM	MED	●	●	
06	FINE	F	●	●	2,8 – 3,9 μm
07	VERY FINE	VF	●	●	2,2 – 3,0 μm
08	SUPER FINE	SF		●	1,4 – 2,1 μm
09	ULTRA FINE	UF		●	0,6 – 1,1 μm

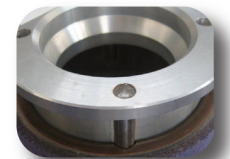
APT APPROACHES EVERY APPLICATION WITH IN-DEPTH KNOWLEDGE AND EXPERIENCE OF THE ABRASIVE PROCESS AND MACHINE FUNCTION

APT SURVEYS YOUR CURRENT PROCESS LINE AND APPLIES YOUR CONTINUOUS IMPROVEMENT INITIATIVES FOR THE FUTURE

APT PRODUCES IN OUR LAB YOUR DESIRED RESULTS WITH SAMPLES OF YOUR MATERIAL

APT DELIVERS RECOMMENDATIONS TO IMPROVE YOUR SURFACE QUALITY

ENGINEERED BRUSH CORES, FLANGES, AND SHAFTS FOR YOUR EQUIPMENT



For Further Details, Please Contact **APT** At:

CELL : 404-932-2104
OFFICE: 352-751-4286
FAX: 352-751-4287

EMAIL : dthiemann@atlantechprocess.com
POST: 1953 LAKE MIONA DRIVE,
LADY LAKE, FLORIDA 32162

Please Visit us on the Web at WWW.ATLANTECHPROCESS.COM