

# APT AFTER POT COOLING TOWER TURN ROLL SURFACE BRUSH CLEANING MACHINE



**PREVENT  
DEFECTS FROM  
DEPOSITED ZINC  
DEBRIS.**

- ✓ NO MORE DIMPLING
- ✓ RANGE OF OSCILLATION  
FREQUENCY MEANS YOU GET  
GREAT RESULTS EVERY TIME
- ✓ BEATS EVERY OTHER SYSTEM  
ON THE MARKET.

## APT AFTER POT COOLING TOWER TURN ROLL SURFACE BRUSH CLEANING MACHINE

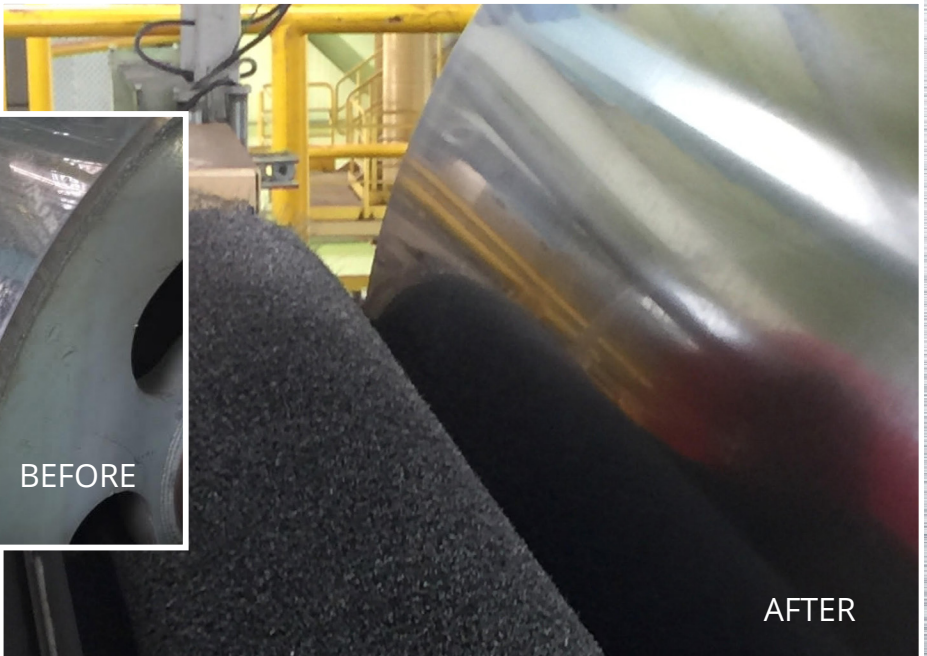
After passing through the zinc pot, the just-coated strip surface is often coated with pesky zinc particles. Should they adhere on to the surface of the **TOWER TURN ROLL**, they'll cause defects on the strip on every revolution.

Scrapers and sleeves don't work. Modernize your line with The APT AFTER POT COOLING **TOWER TURN ROLL SURFACE BRUSH CLEANING MACHINE**.

**BUY NOW**

[INFO@ATLANTECHPROCESS.COM](mailto:INFO@ATLANTECHPROCESS.COM)

816-382-9150 | [ATLANTECHPROCESS.COM](http://ATLANTECHPROCESS.COM)



## **APT AFTER POT COOLING TOWER TURN ROLL SURFACE BRUSH CLEANING MACHINE**

The rotary wire brush, with oscillation system offers a reliable, automated, continuous roll cleaning process. For those of you looking for a sound solution, the APT **TOWER TURN ROLL SURFACE BRUSH CLEANING MACHINE** is right for you for these reasons:

- Direct rotary wire brush contacts the roll surface, removing debris. It is aided by an oscillation system on the brush that can be turned on and off. It has continuous brush adjustment to keep the cleaning process in balance.
- For those tower rolls that crowned, we provide brushes shaped to the form of the roll. This may have been a reason for why such a system has not been used in the past.
- A full housing of clam-shell design retains debris and is easily accessible for cleaning.
- The brush contact to the roll is PLC controlled to maintain uniform pressure on the roll and compensate for wear.
- The brush control system is ready for integration into your line control system. The control system has a local HMI for maintenance purposes located near the machine and another HMI to be located in the main line control room.

**CONTACT APT FOR SALES & RESOURCES**

INFO@ATLANTECHPROCESS.COM | 816-382-9150 | ATLANTECHPROCESS.COM