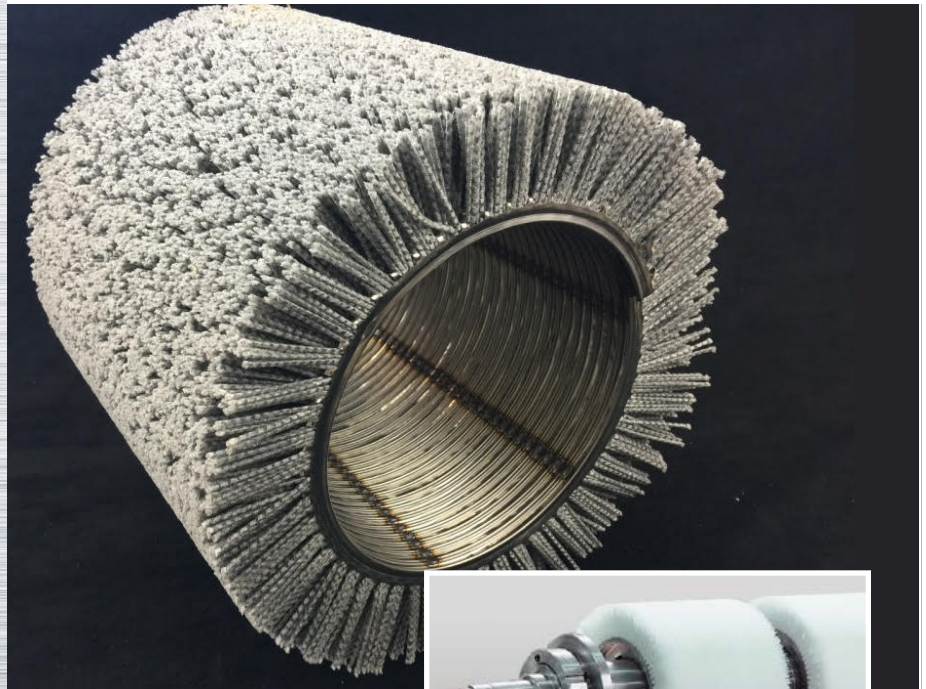


# APT PACKET SYSTEM FOR BRISTLE BRUSHES



## REPLACE & REFURBISH BRUSHES FASTER THAN EVER BEFORE

- ✓ SAVE ON REPLACEMENT COST
- ✓ STREAMLINE SHIPPING AND DELIVERY LOGISTICS
- ✓ RECEIVE REFURBISHED BRUSHES FASTER
- ✓ RE-BUILD BRUSHES IN HOUSE OR AT YOUR LOCAL MACHINE SHOP

## APT PACKET SYSTEM FOR BRISTLE BRUSHES

THE **APT PACKET SYSTEM** is designed to save you time and money by making it easier and faster than ever to refurbish and replace your wide-face brushes.

The brush is assembled in segments (packets) that interlock, making it possible to create a wide-face brush in just the size, radius, and length you need.

All brush segments are delivered dynamically balanced and numbered for immediate installation and use.

**BUY NOW**

[INFO@ATLANTECHPROCESS.COM](mailto:INFO@ATLANTECHPROCESS.COM)

816-382-9150 | [ATLANTECHPROCESS.COM](http://ATLANTECHPROCESS.COM)

# APT AFTER POT COOLING TOWER TURN ROLL SURFACE BRUSH CLEANING MACHINE



**PREVENT  
DEFECTS FROM  
DEPOSITED ZINC  
DEBRIS.**

- ✓ NO MORE DIMPLING
- ✓ RANGE OF OSCILLATION  
FREQUENCY MEANS YOU GET  
GREAT RESULTS EVERY TIME
- ✓ BEATS EVERY OTHER SYSTEM  
ON THE MARKET.

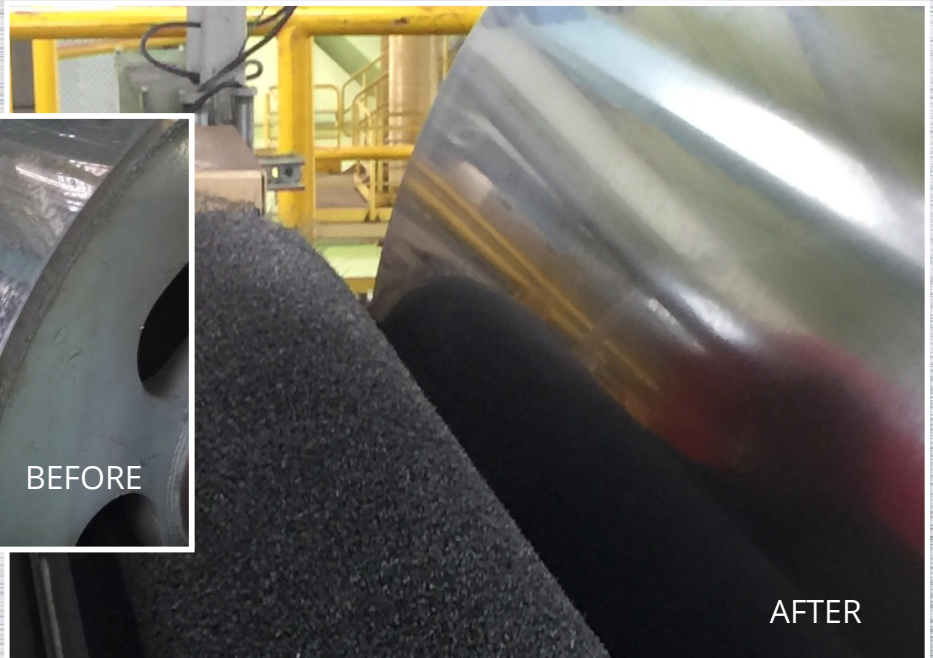
## APT AFTER POT COOLING TOWER TURN ROLL SURFACE BRUSH CLEANING MACHINE

After passing through the zinc pot, the just-coated strip surface is often coated with pesky zinc particles. Should they adhere on to the surface of the **TOWER TURN ROLL**, they'll cause defects on the strip on every revolution.

Scrapers and sleeves don't work. Modernize your line with The APT AFTER POT COOLING **TOWER TURN ROLL SURFACE BRUSH CLEANING MACHINE**.

**BUY NOW**

INFO@ATLANTECHPROCESS.COM  
816-382-9150 | ATLANTECHPROCESS.COM



## **APT AFTER POT COOLING TOWER TURN ROLL SURFACE BRUSH CLEANING MACHINE**

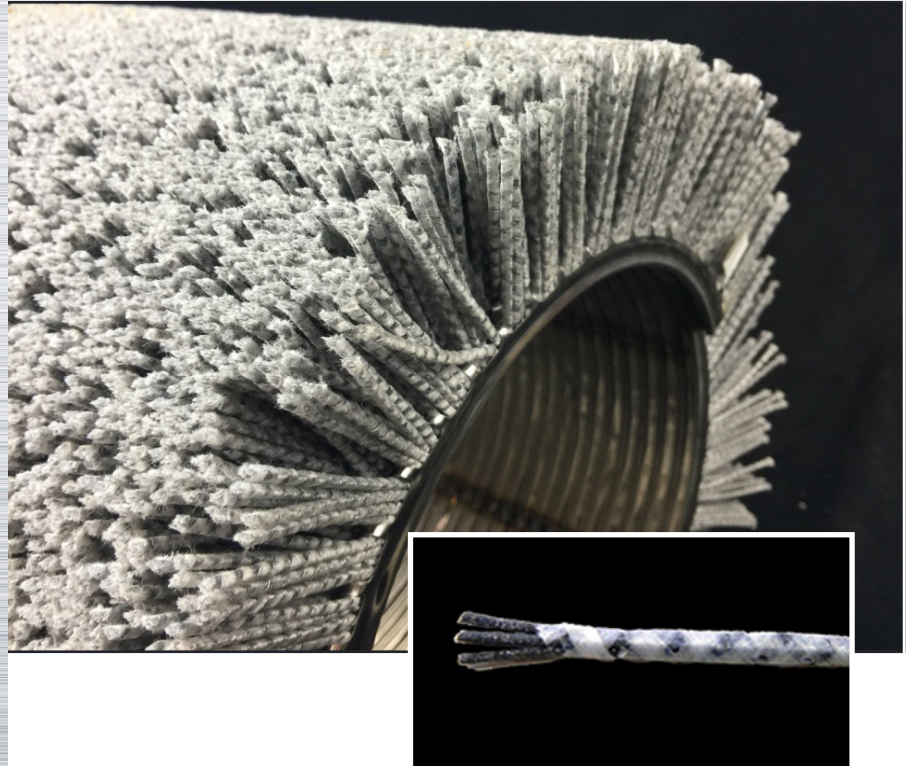
The rotary wire brush, with oscillation system offers a reliable, automated, continuous roll cleaning process. For those of you looking for a sound solution, the APT **TOWER TURN ROLL SURFACE BRUSH CLEANING MACHINE** is right for you for these reasons:

- Direct rotary wire brush contacts the roll surface, removing debris. It is aided by an oscillation system on the brush that can be turned on and off. It has continuous brush adjustment to keep the cleaning process in balance.
- For those tower rolls that crowned, we provide brushes shaped to the form of the roll. This may have been a reason for why such a system has not been used in the past.
- A full housing of clam-shell design retains debris and is easily accessible for cleaning.
- The brush contact to the roll is PLC controlled to maintain uniform pressure on the roll and compensate for wear.
- The brush control system is ready for integration into your line control system. The control system has a local HMI for maintenance purposes located near the machine and another HMI to be located in the main line control room.

**CONTACT APT FOR SALES & RESOURCES**

INFO@ATLANTECHPROCESS.COM | 816-382-9150 | ATLANTECHPROCESS.COM

# APT MULTIFIL BRUSHES



## FOR ABRASIVE AND NON ABRASIVE APPLICATIONS

- ✓ REDUCE BREAKAGE
- ✓ EXTEND BRUSH LIFE
- ✓ CLEAN STRIP BETTER
- ✓ MAXIMIZE SURFACE CONTACT
- ✓ INCREASE GRINDING CAPACITY
- ✓ OPTIMIZE BRUSHING FORCE
- ✓ OPTIMIZE CLEANING SECTION
- ✓ RESISTANT TO CHEMICALS

## APT MULTIFIL BRUSHES

Wide face brushes built using single filament just don't have the cleaning power needed to meet today's quality demands.

That's because single filament brushes have the abrasive applied only at the **tip** of the bristle. When the bristles get compressed more than 3mm, they collapse, and the *sides* of the bristle come into contact with the surface of the strip.

But the sides hold no abrasion. **They can't remove debris.** The strip isn't clean, and the life of the brush is shortened dramatically.

But **APT MULTIFIL** brushes solve the problem with durable bristles engineered using multiple lines of filament.

**BUY NOW**

[INFO@ATLANTECHPROCESS.COM](mailto:INFO@ATLANTECHPROCESS.COM)

816-382-9150 | [ATLANTECHPROCESS.COM](http://ATLANTECHPROCESS.COM)



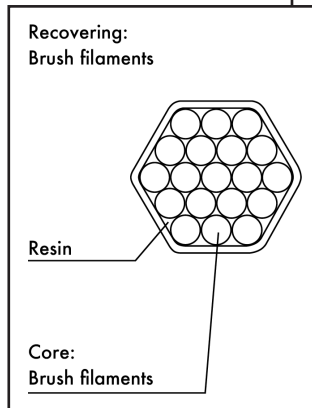
## STOP LIVING IN THE PAST

The wide-face scrubber brushes used today in the cleaning section are the same brushes used 30 years ago.

APT's new-generation **MULTIFIL BRISTLE** is engineered by wrapping multiple extruded, synthetic filaments into a "single" bristle and coating them to ensure maximum stability, longer brush life, and cleaner strip.

Radically improve the speed and effectiveness of cleaning strip simply by calling APT and ordering new brushes.

**CALL NOW: 816-382-9150**



# APT MULTIFIL BRUSHES LAST LONGER AND MAKE METAL STRIP CLEANER

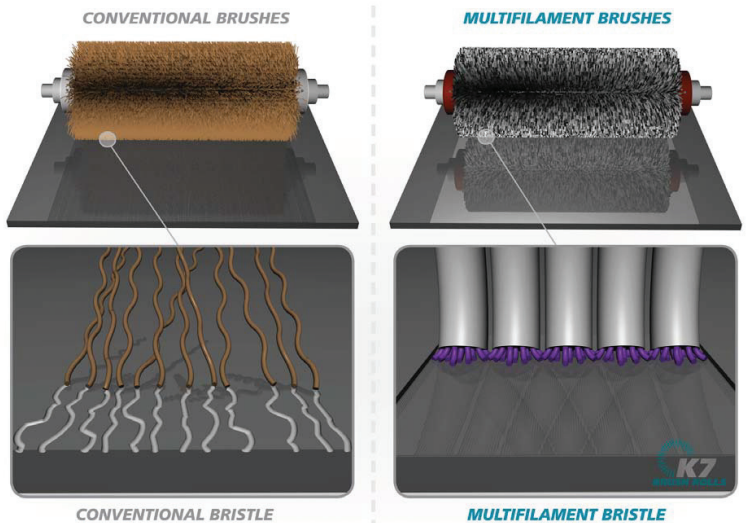
Today's customers want to increase cleaning and line speed in existing (or new!) cleaning equipment. But the problem is conventional cleaning sections/lines have **mechanical limitations**.

Current line configurations don't have free space to add new degreasing, electrolytic or brushing units—and line modification costs are very high.

BUT APT DEVELOPED A SOLUTION to increase your line's cleaning performance using brush rolls filled with **APT MULTIFIL** bristles.

**APT MULTIFIL** brushes are engineered to your application, properly designed using brush filament specified to the correct length and diameter for your job. Strip comes out cleaner, faster than ever before.

Finally, it's possible for you to get dramatic improvements in your cleaning section with little investment.



**CONTACT APT FOR SALES & RESOURCES**

INFO@ATLANTECHPROCESS.COM | 816-382-9150 | ATLANTECHPROCESS.COM